

1997-'99 EDITION

05291
05291

YAMAMOTO'S

**PRESSURE GAUGES
THERMOMETERS**

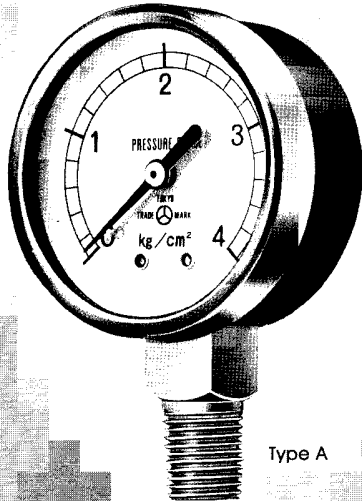
TOKYO
TRADE MARK  YAMAMOTO KEIKI MFG CO.,LTD.

PRESSURE GAUGES

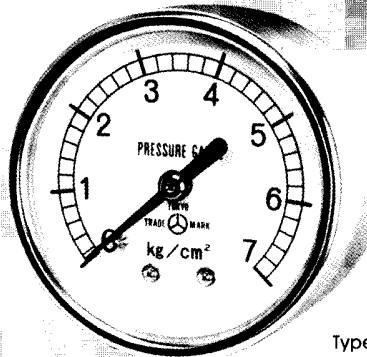
SMALL PRESSURE GAUGE

Pressure gauge suitable for use with all types of small and light weight equipment and units.

- Size : 40 φ / 50 φ
- Pressure range : Pressure gauge 0Mpa~5Mpa (40 φ : to 1.5Mpa)
[0kg/cm²~50kg/cm² (40 φ : to 15kg/cm²)]
Vacuum gauge -0.1Mpa~0Mpa (76cmHg~0cmHg)
- Shape of casing : Standard case, Type A/Type D4
- Connecting thread : R 1/8 · 1/4 ● Accuracy : ±1.5%F.S.

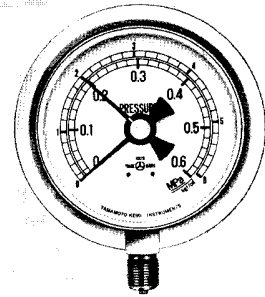


Type A



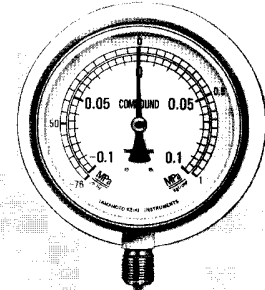
Type D4

「Pressure gauge with "Max.Hand"」



The maximum hand remains at the highest pressure attained until reset by turning the external thumb-screw.

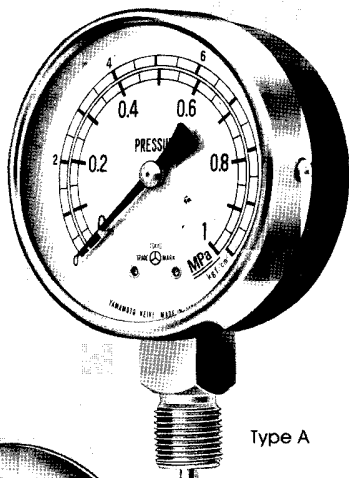
「Compound gauge」



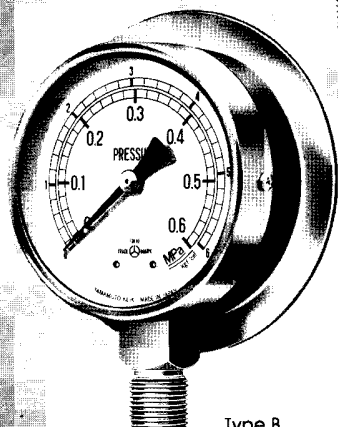
ORDINARY PRESSURE GAUGE

A wide manufacturing range of Bourdon tube pressure gauges meeting JIS.B7505 standard, including pressure gauge, vacuum gauge and compound gauge, are available.

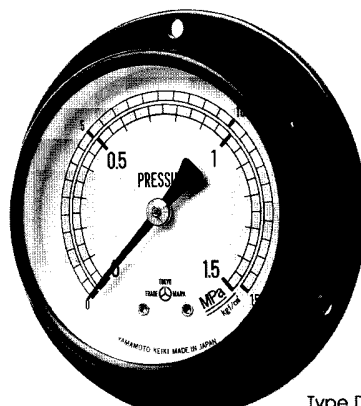
- Classification (mark) :
Ordinary type for steam (M) / Heatproof type (H) /
Vibration-proof type (V) / Vibration-proof type for
steam (MV) / Heat- and vibration-proof type (HV)
- Size : 60 φ / 75 φ / 100 φ / 150 φ / 200 φ
- Pressure range :
Pressure gauge 0Mpa~100Mpa (60 φ : to 25Mpa, 75 φ : to 50Mpa)
[0kg/cm²~1000kg/cm² (60 φ : to 250kg/cm²
75 φ : to 500kg/cm²)]
Vacuum gauge -0.1Mpa~0Mpa (76cmHg~0cmHg)
Compound gauge -0.1Mpa~2Mpa (76cmHg~20kg/cm²)
- Shape of casing : Standard case, closed case
Type A/Type B/Type DF/Type DM
- Connecting thread : 1/4 · 3/8 · 1/2
- Accuracy : ±1.5%F.S.
- Materials for the parts touching liquid : BS/SUS-304/SUS-316
- Others : for ammonia/for acetylene



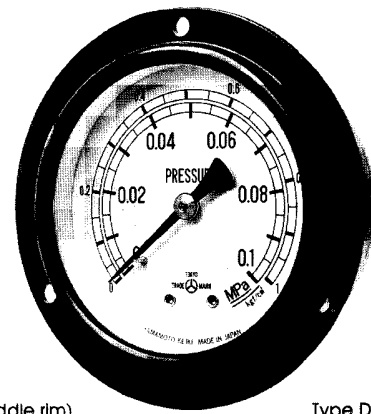
Type A



Type B



Type DM (Middle rim)

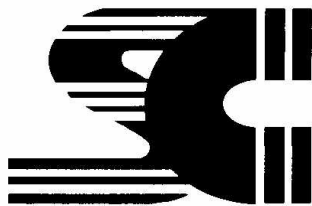
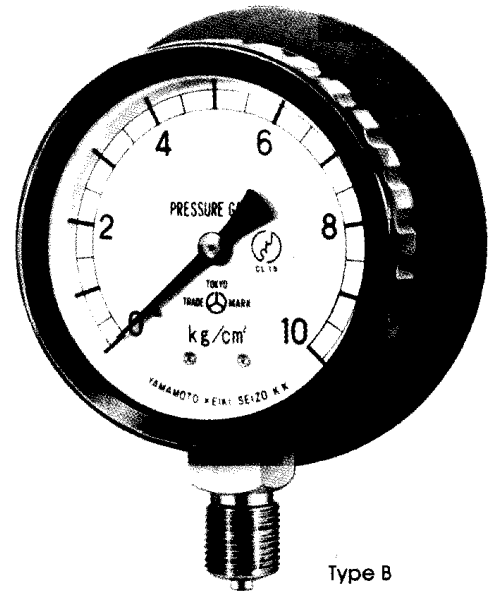
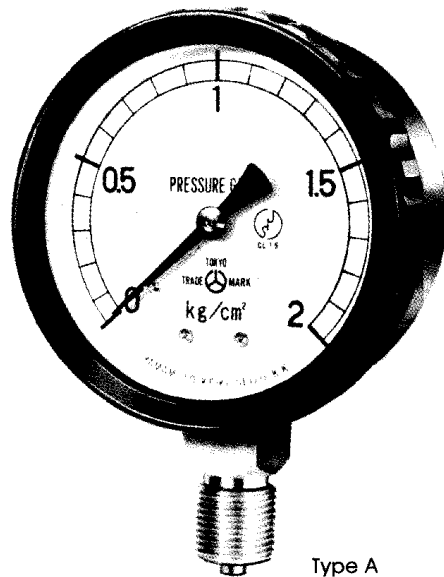


Type DF (Front rim)

WEATHER-PROOF TYPE PRESSURE GAUGE

This is used for outdoor use or where corrosive gas is in atmosphere. Plastic is used for case.

- Size : 60 φ / 75 φ / 100 φ
- Pressure range : Pressure gauge 0Mpa~7Mpa (0kg/cm²~70kg/cm²)
Vacuum gauge -0.1Mpa~0Mpa (76cmHg~0cmHg)
Compound gauge -0.1Mpa~2Mpa (76cmHg~20kg/cm²)
- Shape of casing : Type A/Type B
- Connecting thread : 1/4 · 3/8
- Accuracy : ±1.5%F.S.



成春機械私人有限公司

SENG CHOON ENGINEERING PTE LTD

Office: 32 Cavan Road Singapore 209858. Tel: 62988633 Fax: 62971852, 62984067 Email: scep1@sengchoon.com
Workshop: 51 Gul Crescent Singapore 629545. Tel: 68978880 Fax: 68989663