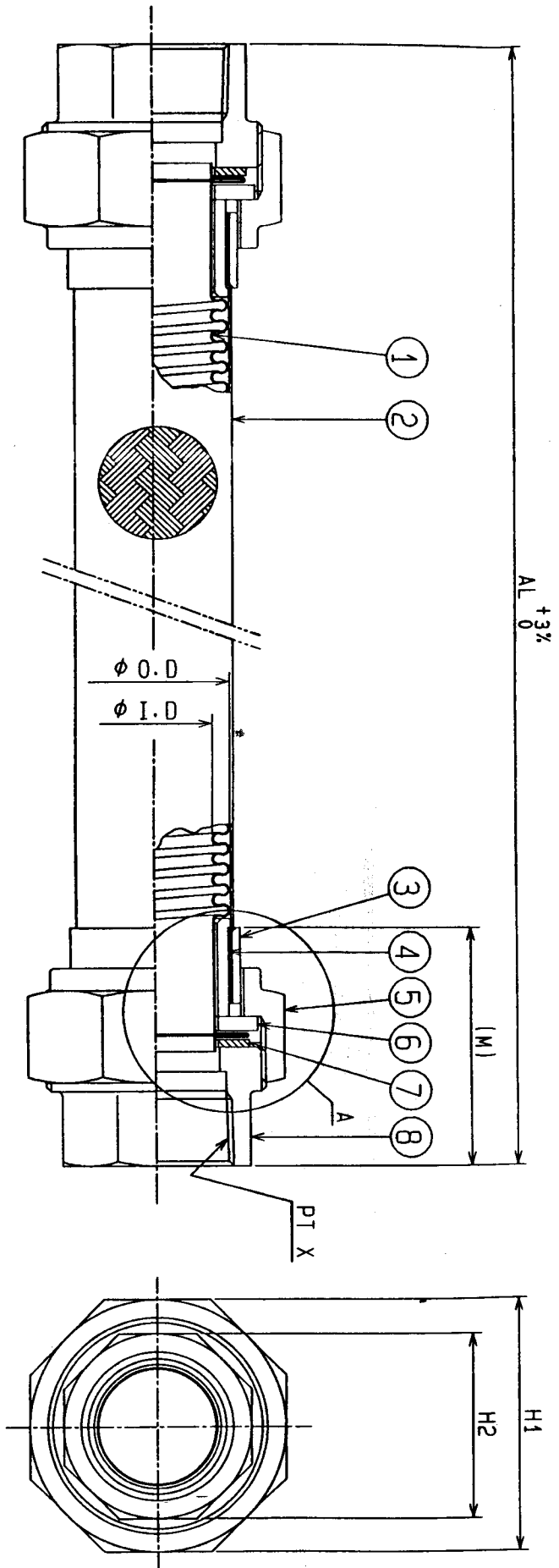




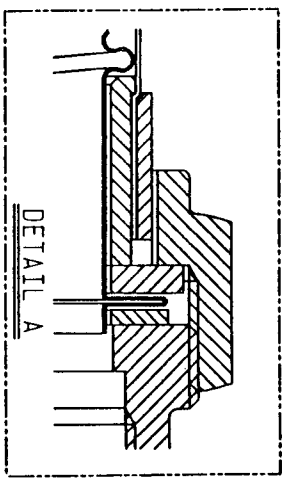
株式会社 東京フレックス

TF-1500 FLEXIBLE HOSE

DWG.No.F4133-53645, 53646



BORE	φ I. D	φ O. D	(M)	PT X	H1	H2	A L	0° TY
1/2"	13.4	18.5	44.0	PT 1/2	40(OCT)	27(OCT)		
3/4"	19.1	25.6	50.0	PT 3/4	47(OCT)	33(OCT)		
1"	25.4	32.8	55.0	PT 1	56(OCT)	41(OCT)		



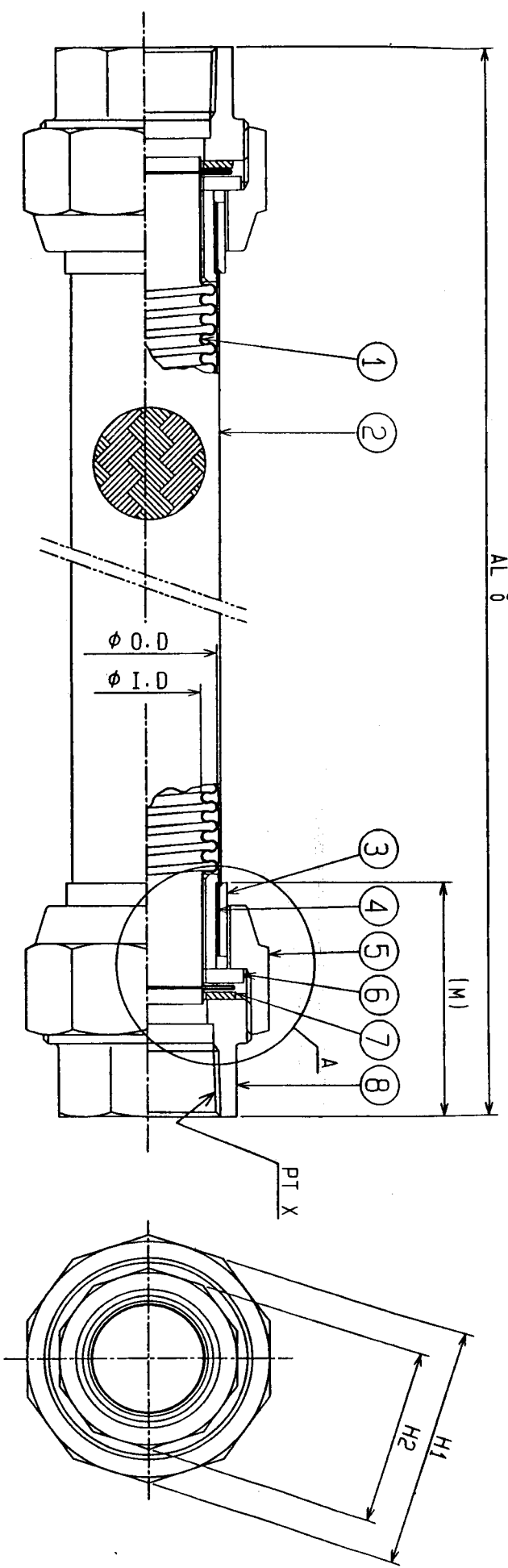
ITEM	PART NAME	MATERIAL	PCS.	MEASUREMENT
①	BELLOWS	SUS304	1	HS-TYPE
②	BRAID	SUS304	1	SINGEL WIRE BRAID
③	OUTER SLEEVE	STPG370	2	
④	INNER SLEEVE	STPG370	2	
⑤	UNION NUT	FCMB270	2	
⑥	RING	SS400	2	
⑦	PACKING	ASBESTOS	2	
⑧	UNION SCREW	FCMB270	2	
⑨				

FLUID		DESIGNED TEMP.	AMB	°C	TEST PRESS.	WATER	24.0 kg/cm ² G	AIR	17.6 kg/cm ² G
DESIGNED PRESS.		16.0		kg/cm ² G					
MOV.	AXIAL	PAINTING							
LATERAL		SCALE	N.T.S						
DATE	APPROVED	DESIGNED							
TITLE		CUSTOMER							
BORE X LENGTH		TF1500							
		FLEXIBLE METAL HOSE							
BORE X LENGTH		1/2" ~ 1" X 1 AL							
Dwg. NO.		F4133-53645							
REV.		R-0							

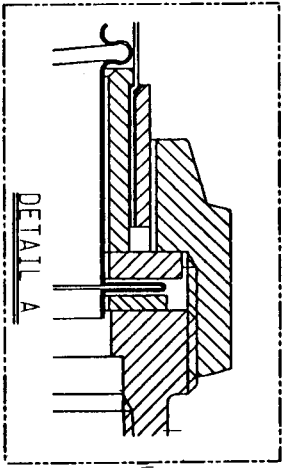
TOKYO FLEX

Mar. 31 '95
Shiomi
Asayama

AL +3%
0



BORE	φ I.D	φ O.D	(M)	PT X	H1	H2	A L	0' TY
1 1/4"	32.9	40.6	55.0	PT 1 1/4	64 (DEC)	49 (DEC)		
1 1/2"	39.3	47.6	56.0	PT 1 1/2	74 (DEC)	56 (DEC)		
2"	53.5	70.0	63.0	PT 2	89 (DEC)	69 (DEC)		



ITEM	PART NAME	MATERIAL	PCS.	MEASUREMENT
①	BELLOWS	SUS304	1	HS-TYPE (2": OS-TYPE)
②	BRAID	SUS304	1	SINGEL WIRE BRAID
③	OUTER SLEEVE	STPG370	2	MFZn-III
④	INNER SLEEVE	STPG370	2	MFZn-III
⑤	UNION NUT	FCMB270	2	MFZn-III
⑥	RING	SS400	2	MFZn-III
⑦	PACKING	ASBESTOS	2	
⑧	UNION SCREW	FCMB270	2	MFZn-III
⑨				

TOKYO FLEX Mar. 31 '95 HSI A. Oyama A. Oyama	FLUID	DESIGNED TEMP.	DESIGNED PRESS.	TEST PRESS.	WATER	24.0 kg/cm ² G
	MOV. AXIAL	AMB	16.0 kg/cm ² G	AIR	17.6 kg/cm ² G	
DATE	PAINTING	SCALE	N.T.S	APPROVED	DESIGNED	
DWG. NO.	BORE X LENGTH	TITLE	CUSTOMER			
F4133-53646	1 1/4" ~ 2" X AL	TF1500 FLEXIBLE METAL HOSE				

R-2

R-3

R-0